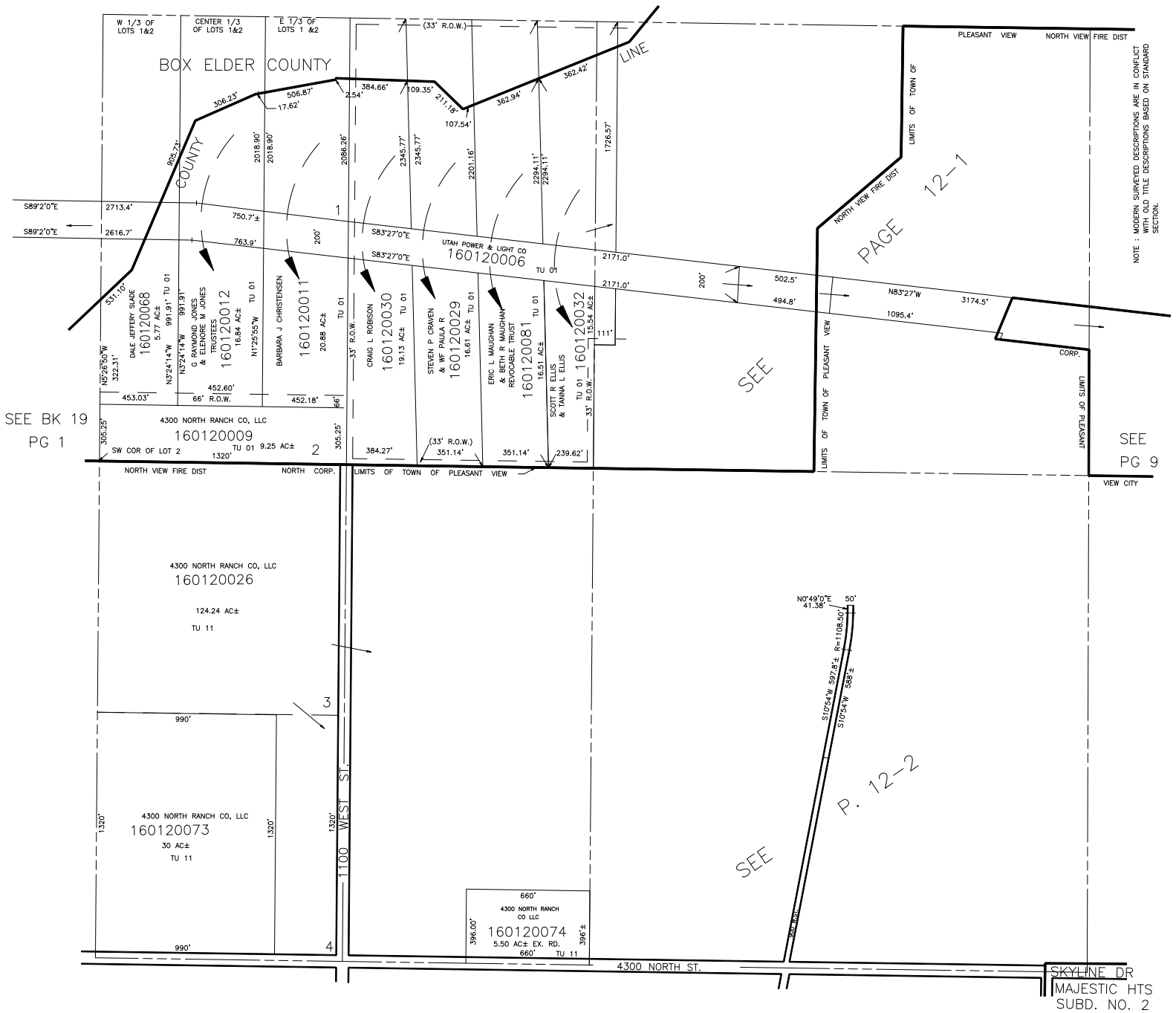


SECTION 18, T.7N., R.1W., S.L.B. & M.

IN PLEASANT VIEW CITY AND WEBER COUNTY

TAXING UNIT: 01, 11, 06

SCALE 1" = 400'



SEE BK 19
PG 1

SEE
PG 9

SEE

SEE PAGE 13

SKYLINE DR
MAJESTIC HTS
SUBD. NO. 2